

Elf Judy Saves Santa's Village



Story by Santa AL Capehart

Pictures by Stacye Leanza

Santa Claus is concerned about global warming. The melting of the Arctic Glacier means his North Pole Village will sink into the ocean.

He needs a new site for his village. But where? Santa has asked me to identify, organize, and facilitate a Task Force of Elves from Canada, Denmark-Greenland, Finland, Iceland, Norway, Sweden, Russia, and the United States. He wants a recommendation for a new site. I know the Arctic Elves from my Elf on the Shelf days.



Elf Judy Saves Santa's Village

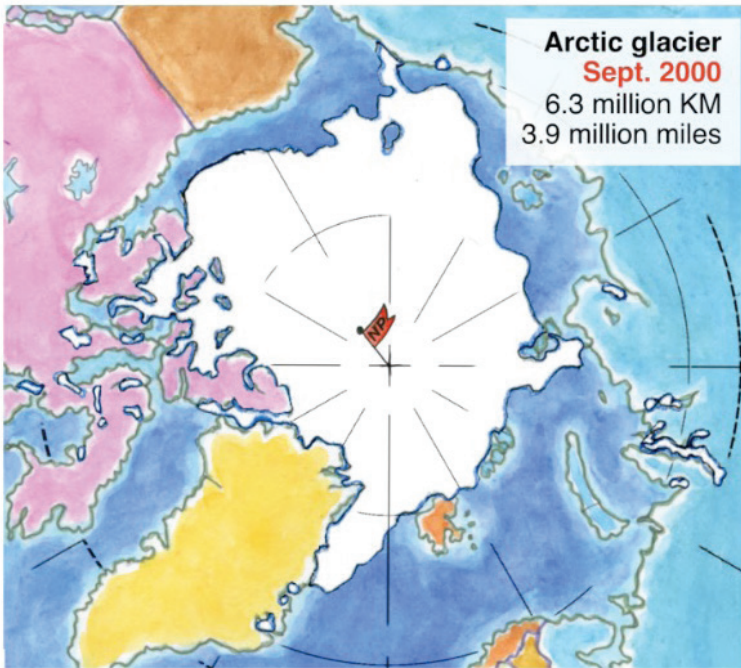
Story © 2023 Santa AL Capehart

Pictures © 2023 Stacye Leanza

**ACC PUBLISHING
PITTSBORO, NC**



For this special mission I have identified Elf Amelia of Canada, Elf William of Denmark-Greenland, Elf Maria of Finland, Elf Aron of Iceland, Elf Jan of Norway, Elf Eva of Sweden, Elf Sofie of Russia, and Elf Nanook of Alaska, USA. We have all gathered around the roundtable in our North Pole Elf Conference Center. We are sipping from big mugs of Elf Rosa's Santa Claus Christmas Cheer Aztecs Hot-Hot Chocolate. We listen to Elf Greg.



He is head North Pole Meteorologist. He gives a history of the earth warming. His current projections from now to 2050 is that our Arctic Glacier will melt and the sea level will rise by 20 feet, or 6.1 meters.

Elf Greg says, “The Arctic is warming four times faster than the rest of the planet. Burning of fossil fuels—coal, oil, and gas—has put too much carbon in our atmosphere. Sunlight that passes though carbon gas creates heat that cannot be dissipated back out. The carbon is like a blanket. Exploring, extracting, and using fossil fuels must STOP. The world needs to go solar.”





To start our discussion, I remind the task force of what we have already done for weather differences around the world. Landing on roofs with no snow, the sleigh's runners are modified to include automatic descending pneumatic hydra floats or wheels with brakes. The sharp reindeer hooves have been coated with floating neoprene covers so they do no damage to roofing tiles and can land on water.

After centuries of giving naughty children lumps of coal (a fossil fuel), Santa Claus has decided to leave a small pet rock in stockings. The rock has “**Be Nice**” written on it. Elf Amelia and Elf Nanook will make the “**Be Nice**” rocks from Felsite stone of the Yukon Territory in North America.





Elf Sofia says, “In 2007 Russia claimed half of the Arctic region including the North Pole. This claim has more than one third of the world’s undiscovered oil and gas reserves. They have planted a Russian flag on the sea floor.”

Elf Amelia of Canada says, “Russia’s claims are bogus. Canada claimed the North Pole and its territorial waters in 1925.”

Speaking up, Elf William of Denmark-Greenland says, “Because Greenland is a territory of Denmark and has the closest land mass—Kaffeklubben Island—to the North Pole, it should be the site for Santa’s New Village”.

I remind the task force, “We need to find a solution to these competing claims. Our village is now in the frozen ice mountains of the Northern Arctic Ocean in international waters. No nation can claim Santa’s Village. It is Santa’s. We need to find a way for Santa to continue to own his village.”

Elf Maria suggests a floating island with anchors.

Elf Aron likes the idea but wonders on whose land the anchors should be dropped.

Elf Jan expresses concern that a floating island would be unstable and roll like a ship at sea.

Elf Amelia says she is sure Canada would agree to release its territorial water claim over the North Pole, with the condition that Santa Claus must own his floating island in perpetuity.

Elf Eva of Sweden says there is a country building islands in the Pacific Ocean. Perhaps Santa could build an island. There is the Lomonosov Mountain Range that runs right over the North Pole.

The 2008 United Nations Law of the Sea recognizes that three countries: Russia, Canada, and Denmark all have legitimate and overlapping claims to 21,160 square miles of the Arctic Ocean floor. This includes the North Pole because the Lomonosov Mountain Range is a triple junction of the Continental Shelf from each of the three countries. All three countries must agree on its



governance, which is determined by a majority vote of a quorum of the eight Arctic Council countries.

Using my (**Star Dust**) powers of mental imaging, I gradually lower the pale blue mist of agreement and cooperation with its silver lining over all assembled.



I remind all that our allegiance and loyalty are to Santa Claus. We help protect and spread the Christmas spirit of love and caring for children and one another.

The task force unanimously adopts the idea that a 1,000-square-mile site be designated the North Pole site for Santa Claus Island.

Moved by Elf William and seconded by Elf Eva, we resolve to recommend that Santa Claus request a fee simple absolute deed for 1,000 square miles of the Lomonosov Ridge, including the geographic North Pole for conservation and use for Santa's new village.

Santa's Village does not produce carbon. His village uses thermal energy from its direct connection to the heat at the center of the earth for electricity generation. Because of that, Santa can offer carbon-offset credits.



The entire task force votes unanimously for the motion with an enthusiastic spirit. We shared the joy and satisfaction of having met the challenge. Santa thanks us for our work. He says he will make the request to the Arctic Council, and he can offer carbon offset credits to Russia, Canada, and Denmark for their support.

We have found a new home at the North Pole for Santa's Village. The task force dissolves as the Arctic Elves return to their assigned countries to keep an eye on the behavior of all their boys and girls.

In my next adventure, I do some self-discovery. See you then.

Love, Elf Judy



AL Capehart began Santa work in 1992 and has done it all, from parades to malls. He published his first book, *Behind Santa's Smile*, in 2014, available at [amazon.com](https://www.amazon.com). Elf Judy emerged as a character in a speculative fiction writing class at Central Piedmont Community College in Pittsboro, NC, in 2012.



Stacye Leanza is an illustrator, art coach, and teacher who is happiest when she gets to use her imagination to serve the greater good of the planet and its people. Find her artwork and ideas at www.leanza-art.com

